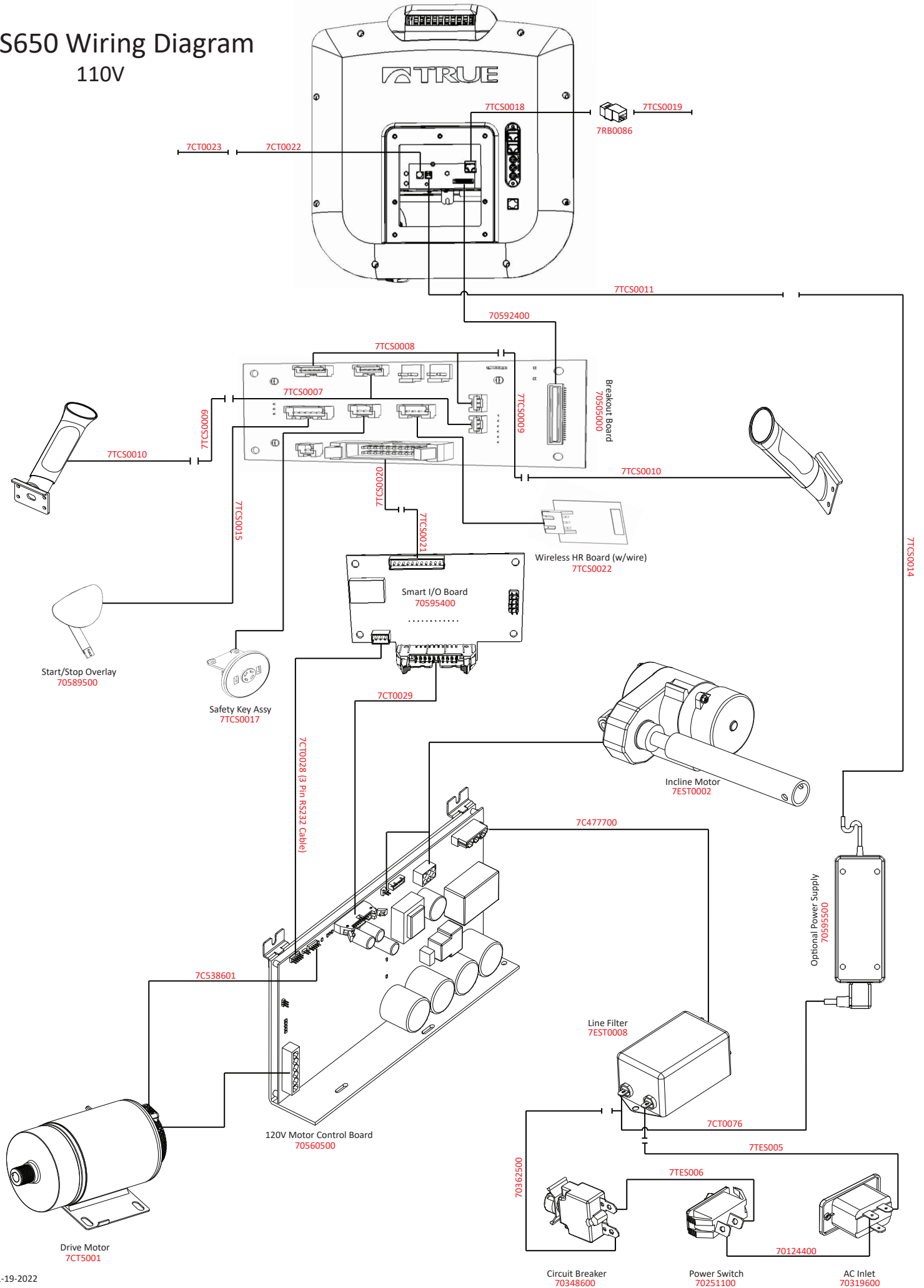


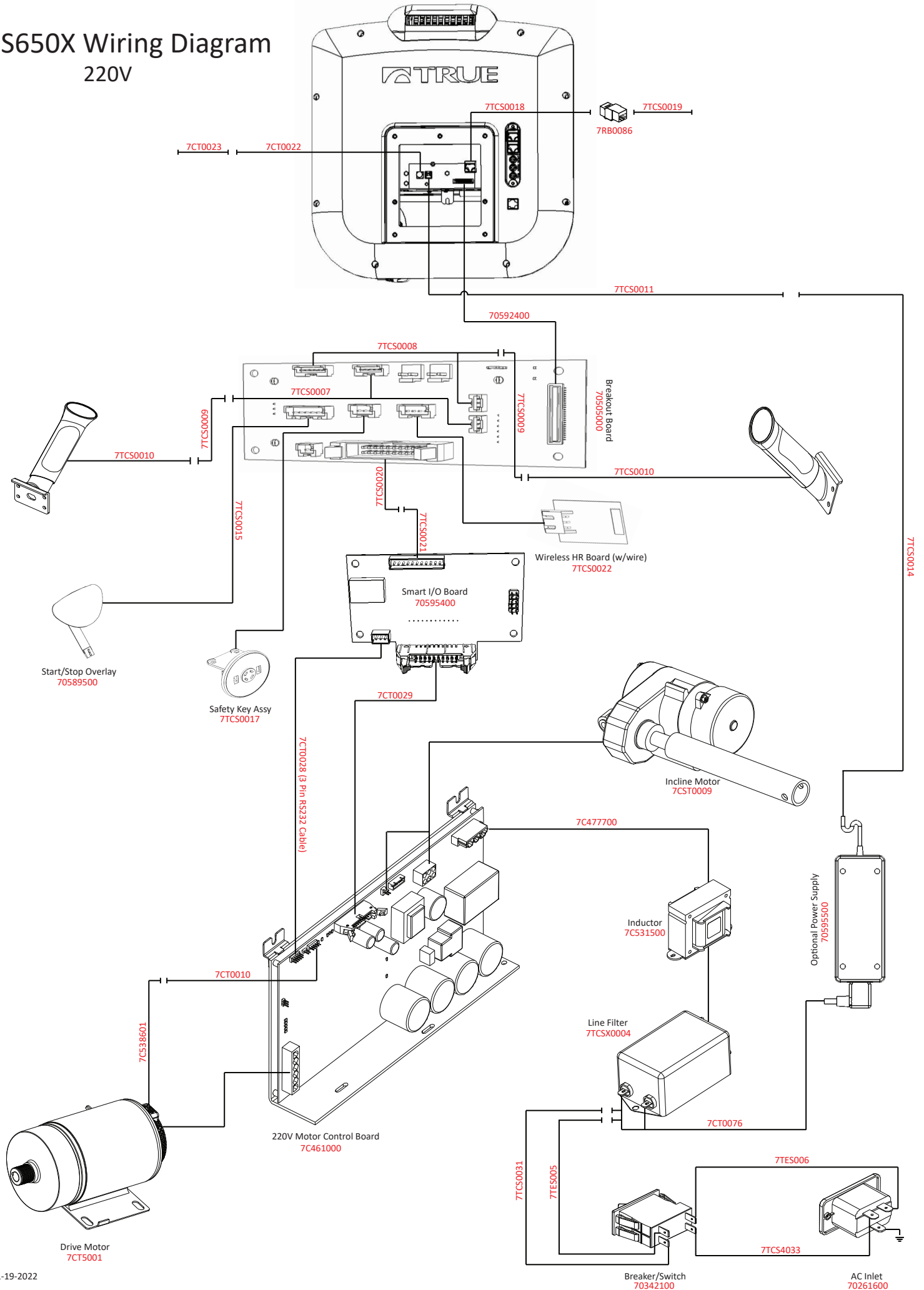
TCS650 Wiring Diagram

110V



TCS650X Wiring Diagram

220V



Bubble #	Item Number	Item Description
1	7TCS6001	PEDESTAL LEFT
3	7CT0001	POWER INLET PLATE, LOW PROFILE 110V NO-4497C
4	7C471800	GROMMET, SCREW #10 (242-180602-93)
5	7C472800	SCREW, #10X1/2" PPHSMS TYP B,ZN STL
6	70319600	PWR INLET, C20
7	70553600	PWR CRD, 115V 20A RT ANGLE PLG DETACH - VERIFY
8	70020300	6/32 X 3/8 PPHMS BO
10	70348600	SWITCH/BRKR,20AMP(P&B #W28-XQ1A-20)
11	7TCS0001	SAFETY KEY
12	70380500	STRAIN RELIEF BUSHING
21	7EST0008	FILTER, LINE XEB-011
23	70560500	MOTOR CONTROLLER, ACMC 120V ACK7T (W/ KSP082 &
24	70013500	10/32 X 3/8 PPH TFS BO
25	7CT5001	MOTOR, DRIVE, TCS550 & TCS650 - XM-280
28	7PS0053	BOLT M8 X P1.25 X 115 SEA8-115-201
36	7CT0006	PLASTIC, INSULATED P-2610A
37	70125500	5/16-18 NYLOC NUT
38	7CST0004	BELT, POLY-V CA-250J10
39	7EST0002	INCLINE MOTOR (MS-1000)
40	70183600	CLEVIS-PIN 3/8X1 3/4 UNDER HEAD/ZN
41	70183700	CLEVIS-PIN 3/8X2 1/8 UNDER HEAD/ZN
42	7R498800	COTTER PIN,RUERING PIVOT POINT 3/8"
44	7TCS0002	INCLINE RACK
46	7PS0070	TRANSPORT WHEEL DIA10 X DIA60 X30T PB-00-003
47	7PS0071	BOLT M 10XP1.5X60 30MM SGC10-60-301
48	7PS0057	WASHER 10IDX20ODX2.0T SPA100-200-20
53	7R482700	SHIELD, MOTOR PAN WATER - ES

Bubble #	Item Number	Item Description
54	70203100	BUMPON - 7/8DIA X .4HIGH
55	7PS8047	DECK BUMPER LONG P-1301F
56	7TCS0026	DECK BUMPER SHORT
59	7CST0003	FLEX DECK, CS MB-038A
63	7CST0007	ROLLER, FRONT CS NRL-027B
64	7EST0006	ROLLER, REAR ES NRL-027A
65	7PS0052	BOLT M8 X P1.25 X 35 SIA8-351
67	7CST0005	TREADBELT, LC BASE 559 X 3264 X 2MM LUBED
68	7PS0033	NUT M10 X P1.5 SOA10
70	7PS0074	BOLT M10 X P1.5 X 100 SGA10-1001
73	7TCS6A001	STRADDLE COVER LEFT
74	7TCS6A002	STRADDLE COVER RIGHT
75	7CT0007	TRIM, NEW SIDE NO-4437
79	7EST0012L	TRIM, LEFT PEDESTAL PIVOT P-2601L
80	7EST0012R	TRIM, RIGHT PEDESTAL PIVOT P-2601R
81	7RT0138	PPHS M5-0.8 X 10MM BLACK
82	70304100	NUT, CAGE 3/8-16 X .162 PNL MAX THK
84	7C461100	LEVELING FOOT 2 1/2" D / W JAM-NUT
89	70362500	WIRE ASSY,CRKT BRKR/SWTCH 2 FLTR EX
90	7C528200	WIRE ASSY,BROWN BRKR/SW 3 FILTER CS
91	7C528300	WIRE, SPEED SENSOR GROUNDING -CS
92	7RB0086	COUPLER RJ45
94	7TCS0003	BOLT (BLUE NYLOK) #10-32UNFX10MM
100	7R484800	SOCKET, TREELOK CATCH
105	7EST0011L	TRIM, FRONT LT SIDE PLASTIC P-2600L
106	7EST0011R	TRIM, FRONT RT SIDE PLASTIC P-2600R
111	7TCS0029	PLATE, PIVOT COVER W/ SCREWS

Bubble #	Item Number	Item Description
114	7PS0094	WASHR DIA6XDIA16X1.0T SPA060-160-10
131	7TCS60014	CONSOLE RACK WELDMENT
139	70507700	SCREW-#6 X 3/8" PPH HI-LO PLASTIC
141	70589500	START STOP OVERLAY, CLICK TOUCH (TRU02-004-01
144	7TCS6003	SHOULDER PLASTIC TOP WITH START STOP OVERLAY
146	7TCS6004	SHOULDER PLASTIC BOTTOM
150	7TCS6005	FOAM ARM ASSY LEFT
151	7TCS6006	FOAM ARM ASSY RIGHT
152	7TCS0027	BOLT-HEX HEAD 1/4"-20UNC X 20MM
155	7TCS0023	BREAK OUT BOARD MOUNTING KIT
156	70595400	SMART CARD 2014 TREADMILL (YELLOW DOT)
168	70592400	CABLE, 50 PIN HIGH DENSITY (550MM)
170	7CT0022	CABLE, UPPER COAX 19" XL-1051A
171	7CT0023	CABLE, LOWER COAX 91" XL-1051B
172	7TCS0011	WIRE - EXTERNAL DC PEDESTAL EXTENSION TOP
173	7TCS0014	WIRE-EXTERNAL DC PEDESTAL EXTENSION BOTTOM
175	7TCS0015	WIRE-MEMBRANE KEY
176	7CT0028	WIRE, COMM CABLE RS232 17" 3P+10P XL-1048
177	7CT0029	WIRE, 20 PIN DATA INTERFACE XL-1049
192	7TCS6007	CHR GRIP TUBE WELDMENT ASSY LEFT
193	7TCS6008	CHR GRIP TUBE WELDMENT ASSY RIGHT
194	7TCS6009	HDR FOAM GRIP
195	70589200	THUMBSWITCH, INCLINE, LEFT, CLICK TOUCH (TRU02
198	70505000	BREAKOUT BOARD W/ CHR BOARD
202	7TCS0024	SEMS BOLT M4XP0.7X12 NYLOK
203	7TCS0017	SAFETY KEY INLET ASSY
208	7TCS60010	TRAY INSERT PAD

Bubble #	Item Number	Item Description
209	7TCS60011	SHOULDER TOP INSERT PAD
210	7TCS60012	CONSOLE MAST
211	7TCS60013	CHR INSERT PLASTIC (DOG HOUSE) - WARRANTY ONLY
212	7TCS60017	REAR COVER ASSY
213	7RT0137	BOLT 4X12 - SCI4-12
213	7TCS4015	REAR CONSOLE COVER INSERT
218	7TCS0018	RJ45 NETWORK CABLE (TOP)
219	7TCS0020	IOLCB WIRE (UPPER)
220	7TCS0022	WIRELESS HR BOARD ASSY
107A	70309500	PLUG, 1" MTR MNT BOLT CVR HOLE DOMED
114A	70247200	WASHER, SPECIAL #8
133L	7TCS0005	CONTACT HR ASSY, LEFT - CHARCOAL - USE 7TC0439
133R	7TCS0006	CONTACT HR ASSY, RIGHT - CHARCOAL - USE 7TC043
136A	7TCS0007	LEFT LOWER QUICK ACCESS KEY CABLE W/CHR
136B	7TCS0008	RIGHT LOWER QUICK ACCESS KEY CABLE W/CHR
136C	7TCS0009	MID QUICK ACCESS KEY CABLE W/CHR
136D	7TCS0010	UPPER HAND GRIP QUICK ACCESS KEY CABLE W/CHR
14A	7TCS60021	BOLT 3/8" -16UNC X 140MM
218A	7TCS0019	RJ45 NETWORK CABLE (BOTTOM)
219A	7TCS0021	IOLCB WIRE (LOWER)
33-1	7PS0099	WASHER, SPRING M8 SPB8
44A	7PS0066	RACK, INCLN PVT BLCK NT-1000*P-1037
65A	7FT0084	BOLT, M8XP1.25X40
68A	7FT0074	NUT, M8XP1.25
70A	7TCS60020	REAR ROLLER BOLT
82B	70308500	SCREW, 10-32X1 1/2 PPHMS ZN TYPE F
85/86	7TCS6A003	REAR ROLLER COVER SET

